

[THE LinX Link]

April 2026

Volume #3

Focus on the Market: U.S. Midwest Key Destination Served

Powering Efficient Trade from Prince Rupert into America's Manufacturing Heartland

Welcome to the third edition of The LinX Link.

As LinX continues progress towards operations in early 2027, we're spotlighting one of North America's most strategic trade corridors: the U.S. Midwest. This region, anchored by Chicago and extending into nearby industrial and distribution hubs, represents billions of dollars in annual import demand and manufacturing throughput.



LinX is uniquely positioned to bring value to those importing into the region from the Asian-Pacific by combining Prince Rupert's natural advantages with CN's rail network to offer reliable, high-velocity service into the heart of the Midwest.

U.S. Midwest: A Strategic Engine of North American Trade

The U.S. Midwest remains one of the largest concentrated markets for imported goods in North America. It is home to automotive, heavy machinery, consumer goods, and large industrial ecosystems that underpin supply chains. Rail-centric logistics are crucial in this vast inland region, and LinX is designed to align with this demand through its transload services:



Transloading at tidewater adds agility and flexibility, while improving velocity for sophisticated supply chains.



Direct CN rail connectivity provides competitive transit times to Chicago and beyond.



Midwest manufacturing and distribution centers thrive on consistency and visibility.

[Community Corner]

Connecting Global Trade to Local Impact

While LinX strengthens trade corridors into the U.S. Midwest, our foundation remains firmly rooted in Prince Rupert and Northern British Columbia.

As development progresses, LinX continues to:

- Prepare skilled operators and logistics professionals for the facility's launch. Support local procurement and industrial capacity growth through regional service providers and contractors.
- Support local community initiatives through sponsorship and partnerships.

The expansion of transload infrastructure is not only about cargo velocity – it is also about sustainable economic activity for the region. Increased throughput translates into:

- Stable long-term employment opportunities
- Expanded port-related industrial services
- Greater participation of Northern BC businesses in global supply chains

LinX is designed to serve international markets like the U.S. Midwest, but its success is built on local collaboration, responsible growth, and community partnership.

We remain committed to transparent communication as construction milestones advance and operational readiness continues toward early 2027.

The LinX Advantage into the Midwest

From the coast to the corridor, LinX delivers specific value:



Transit Efficiency & Reliability

Cargo moving through LinX benefits from a rail-centric schedule that bypasses some of the congestion seen at other ports and long-haul highway bottlenecks. CN's strong connectivity to the Midwest supports predictable transit times.



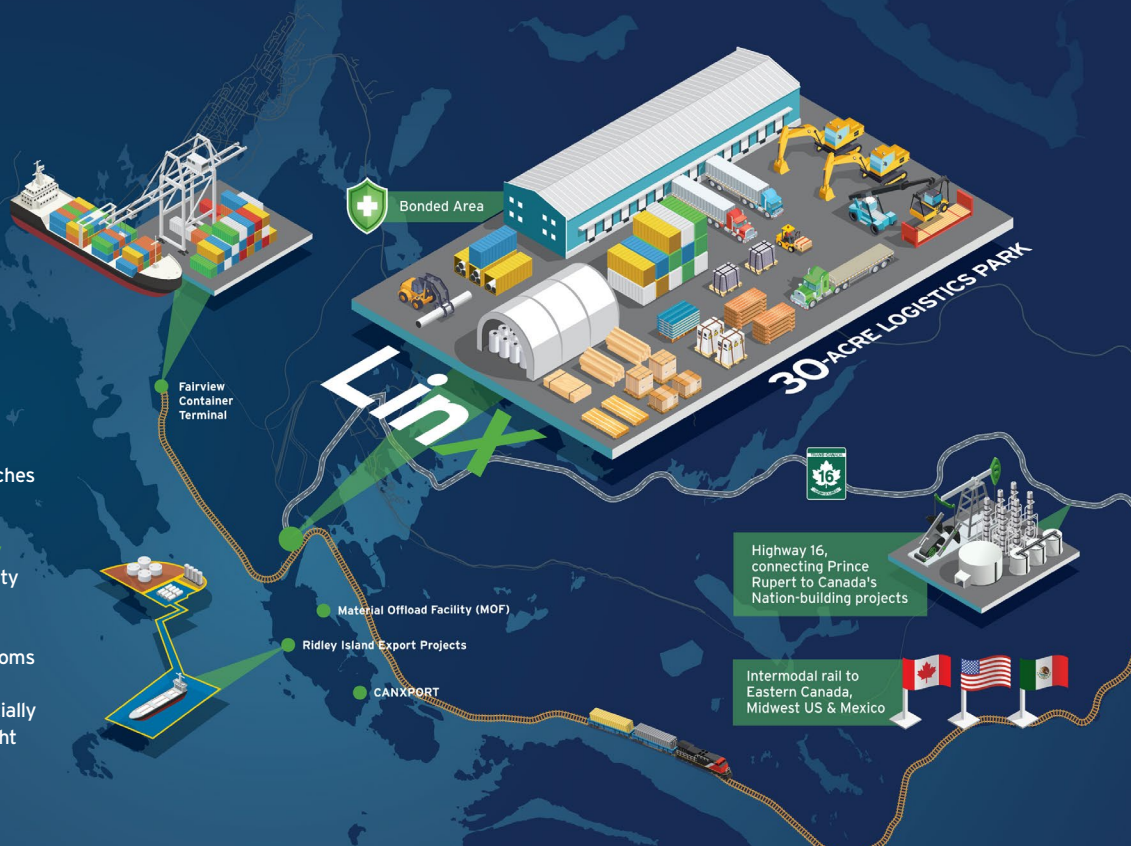
Optimized Transload Solutions

Converting 40-ft marine containers into 53-ft domestic containers at LinX improves cargo density, lowers per-unit costs and reduces the environmental footprint. This translates into efficient supply chains through faster throughput and reduced touches at Midwest distribution centers.



In-Bond & Cross-Border Efficiency

LinX's bonded transloading capability means cargo intended for U.S. destinations can move under bond through Canada, clearing U.S. customs before final delivery. This allows smooth cross-border transit—especially important for importers serving tight production timelines at Midwest facilities.



Looking Ahead

As LinX transitions from design to operation, our focus remains on connecting the Pacific gateway to core North American demand centers. The U.S. Midwest stands out as a region where rail-centric import flows deliver strategic value reducing total transit time, strengthening supply chain resilience, and expanding reach for global cargo owners.

[Contact]

- **Community**
community@intermodeX.com
- **Business & Cargo Development**
Edgar Salinas
edgar.salinas@intermodeX.com
- **Interested in working at IntermodeX**
careers@intermodeX.com



Learn more

rupertadvantage.com/linx

